

ADHESIVES

LIQUID ROC 300

- Twin Tube – polyester resin base, benzoyl peroxide hardener
- Square cut rods – A307 steel, zinc plated. Other sizes, materials and finishes available upon request
- 9 month shelf life



BENEFITS:

- Pre-measured adhesive
- Easy to use and can be saved for re-use
- Nozzle included
- Can be used with screen tubes in hollow applications
- Works well in horizontal and overhead application

APPLICATIONS AND INTENDED USE:

Used for Doweling in DOT road work applications and for pasting ports during crack repair.



CURE TIME

Concrete Temperature	Time
Over 80°F.	20-30 min.
80° to 68°F.	30-40 min.
68° to 58°F.	40-50 min.
58° to 48°F.	60 min.
48° to 38°F.	2 hrs.
38° to 28°F.	4 hrs.

LIQUID ROC 700+

- Two component vinyl ester resin high strength adhesive
- Available as a single tube (10 oz) and twin tube (28 oz)
- Designed for anchoring applications in cracked or uncracked concrete and masonry
- Packed with mixing nozzle
- 18 month shelf life

BENEFITS:

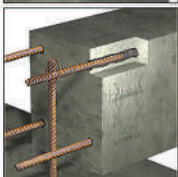
- Styrene free formula is low odor and VOC free
- Single tube configuration for use in a standard professional grade caulk gun
- US-approval acc. to AC 308 in concrete (ICC-ES): ESR-4004
- Certified for drinking water applications acc. to NSF Standard 61
- For heavy duty anchoring dowelling and post-installed rebar connections
- Fire resistance test report: 3290/0966
- Can be installed overhead and in water-filled holes
- Suitable for attachment points with small edge distances and anchor spacings due to an anchoring free of expansion forces
- High chemical resistance
- Low odor
- Cartridge can be reused up to the end of the shelf life by replacing the static mixer or resealing cartridge with the sealing cap
- Fast cure times even at the coldest temperatures (14°F or -10°C)



10 Oz. Single Tube



28 Oz. Twin Tube



APPLICATIONS AND INTENDED USE:

Base material:

Cracked and non-cracked concrete, light-concrete, porous-concrete, solid masonry, hollow brick, natural stone. (Attention! Natural stone, can discolor; should be checked in advance); hammer drilled holes, hollow material should be drilled without hammer drill mode.

Anchor elements:

Threaded rods (zinc plated or hot dip, stainless steel and high corrosion resistance steel), reinforcing bars, internally threaded inserts, profiled rod, steel section with undercuts (e.g. perforated section).

Temperature range:

Installation temperature: 14°F up to 104°F. Cartridge temperature: min. 41°F. Optimal: 70°F. Base material temperature after full curing: 40°F to 248°F. Refer to load table for any effects.

LIQUID ROC 200

- Urethane hybrid adhesive styrene free formula
- Available as a single tube (10 oz) and twin tube (28 oz)
- Designed for bonding threaded rod, rebar or internally threaded inserts into hardened concrete
- Nozzle provided for dispensing

BENEFITS:

- Styrene free formula is low odor and VOC free
- Single tube configuration for use in a standard professional grade caulk gun
- Can be installed into walls or even overhead
- Fast cure time even at the coldest temperatures (23F or -5C)
- In service temperature of up to 320F (160C)
- Certified for drinking water applications to NSF Standard 61
- Extremely high chemical resistance
- 18 month shelf life
- ICC-ES approval according to AC308 in concrete, ESR-4252
- Certified for drinking water applications acc. to NSF Standard 61
- For heavy anchoring - doweling and post-installed rebar connection
- Fire resistance test report: up to 120 min
- Overhead application
- Suitable for attachment points with short edge distance and anchor spacing due to an anchoring free of expansion forces



10 Oz. Single Tube



28 Oz. Twin Tube

- Low odor
- High bending and compressive strength
- Cartridge can be reused up to the end of the shelf life by replacing the static mixer or resealing cartridge with the sealing cap
- Meets ASTM C881, Type IV, Grade 3, Class A, B and C

APPLICATIONS AND INTENDED USE: Suitable for fastening facades, roofs, wood construction, metal construction, metal profiles, columns, beams, consoles, railings, sanitary devices, cable trays, piping, post-installed rebar connection (reconstruction or reinforcement), etc.

EP800 PURE EPOXY

- 2-Component Injection Anchoring System

BENEFITS:

- Maximum Performance in Concrete
- Compliant with newest design codes
- OSHA compliant
- Qualified for seismic design (category A-F)
- High chemical resistance
- Low odor
- 24 Month shelf Life
- High bending and pressure strength
- The cartridge, can be reused up to the end of the shelf life by replacing the static mixer or resealing the cartridge with the sealing cap
- EP800 has the highest long-term temperature in the USA, reaching up to 140°F



Single-tube 9.5 fl.oz (280ml)



Twin-tube 20.5 fl.oz (610ml)

APPROVALS:

- ICC-ES (ESR-4901) cracked concrete
- Tested to AC308/ACI1355.4
- LEED Attestation (VOC)
- Contact customer service for approvals/listings for state DOT's

APPLICATIONS AND INTENDED USE:

- Suitable for heavy anchoring and post-installed rebar connection
- Base material: Cracked and uncracked concrete
- Application in dry, wet, submerged concrete or water-filled boreholes, and overhead application. Suitable for the fixation of facades, roofs, wood construction, metal construction, metal profiles, columns, beams, consoles, railings, sanitary devices, cable trays, piping, etc.

Reactivity

Temperature of base material				Maximum working time	Fulls curing time	
41 °F	(+5 °C)	to	49 °F	(+9 °C)	80 min	48 h
50 °C	(+10 °C)	to	58 °F	(+14 °C)	60 min	30 h
59 °F	(+15 °C)	to	67 °F	(+19 °C)	40 min	20 h
68 °F	(+20 °C)	to	76 °F	(+24 °C)	30 min	11 h
77 °F	(+25 °C)	to	85 °F	(+29 °C)	12 min	9 h
86 °F	(+30 °C)	to	103 °F	(+39 °C)	8 min	6 h
104 °F (+40 °C)				7 min	4 h	
Cartridge temperature				41 °F (+5 °C) to 104 °F (+40 °C)		